

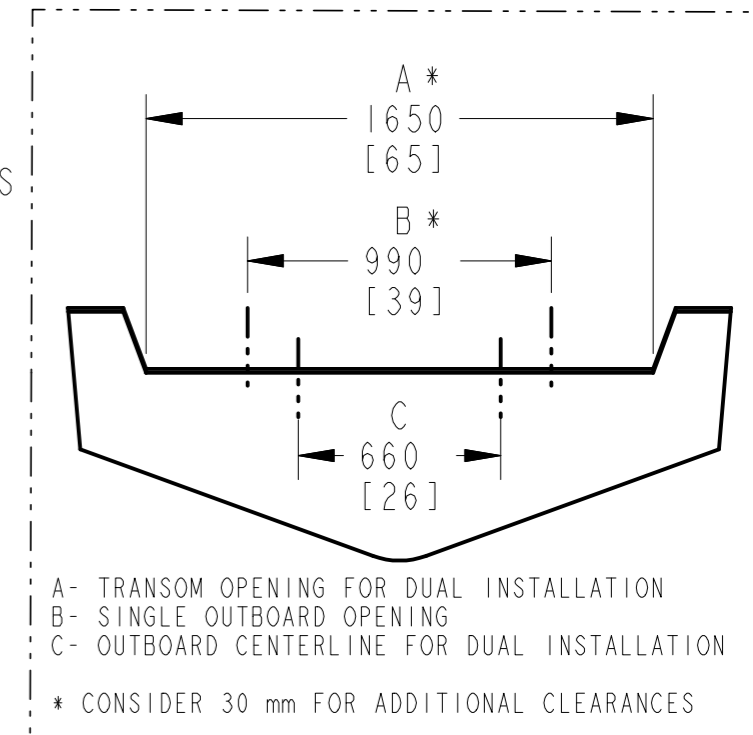
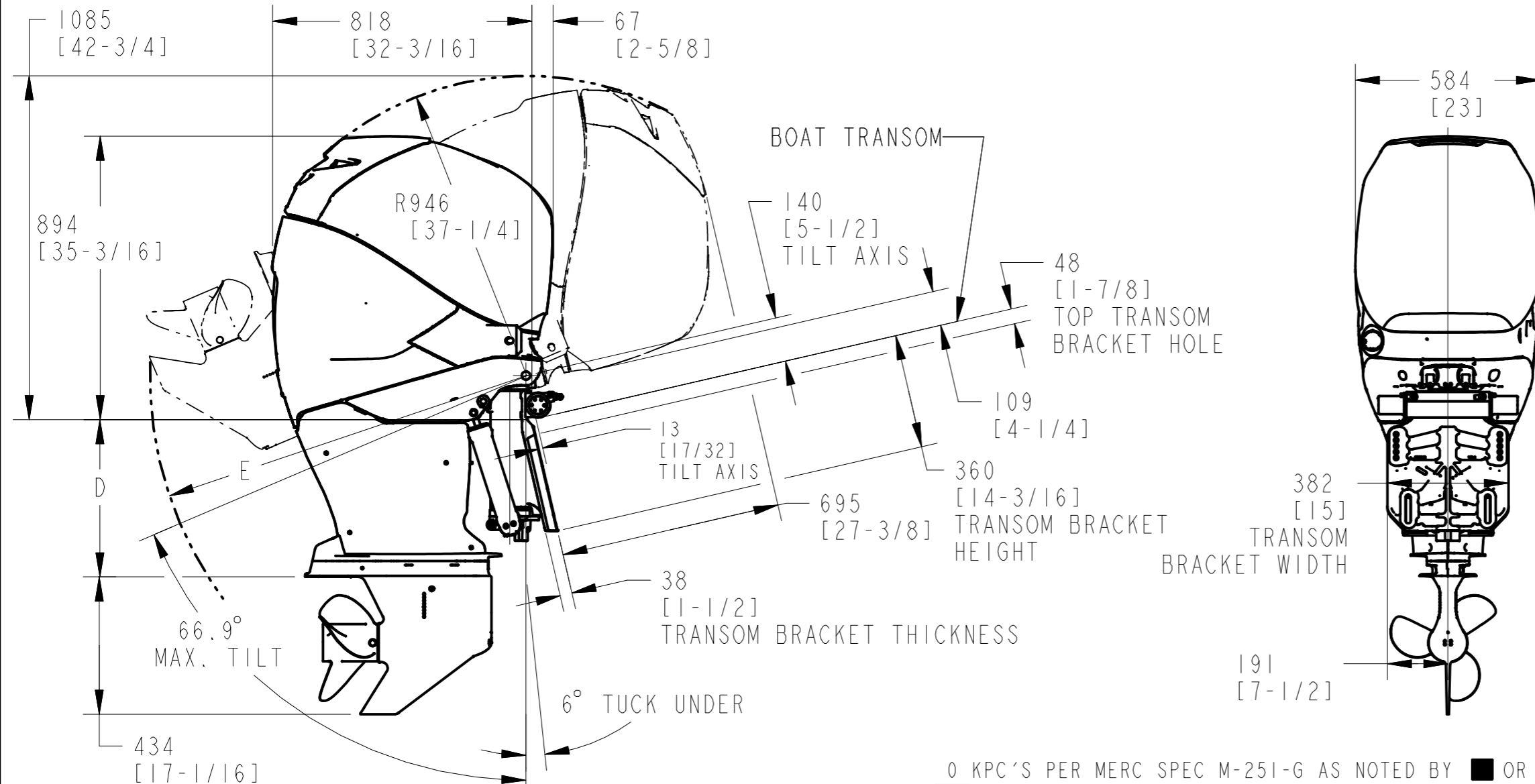
MODEL: L6 4-STROKE 200-300 HP			
	LONG SHAFT 20"	EXTRA-LONG SHAFT 25"	EXTRA-EXTRA-LONG SHAFT 30"
D	497 [19-1/2]	624 [24-1/2]	751 [29-1/2]
E	1190 [47]	1317 [52]	1444 [57]

LET	REVISIONS	BY	DATE	ECN
A	DRAWING RELEASE.	UD	24JUL2007	20364-07
B	SEE SHEET 3	UD	07FEB2008	20732-07

NOTES:

- 1) PRIMARY DIMENSION UNITS ARE IN METRIC, INCH UNITS ARE WITHIN PARENTHESIS.
- 2) TILT POSITION IS BASED ON A 14° TRANSOM ANGLE. A TRANSOM WITH AN ANGLE GREATER THAN 14° WILL REDUCE THE MAXIMUM TILT ANGLE AND INCREASE TUCK UNDER ANGLE.
- 3) DIMENSIONS FROM BOAT TRANSOM ARE WHEN OUTBOARD IS MOUNTED THRU TOP OUTBOARD TRANSOM BRACKET HOLE. HOLES ARE SPACED 19MM/(3/4") APART.
- 4) SEE ABYC-S-12 STANDARD FOR ALL OTHER DIMENSIONS.

FROM TOP OF TRANSOM
TO TOP OF OUTBOARD
WHEN TILTED UP.

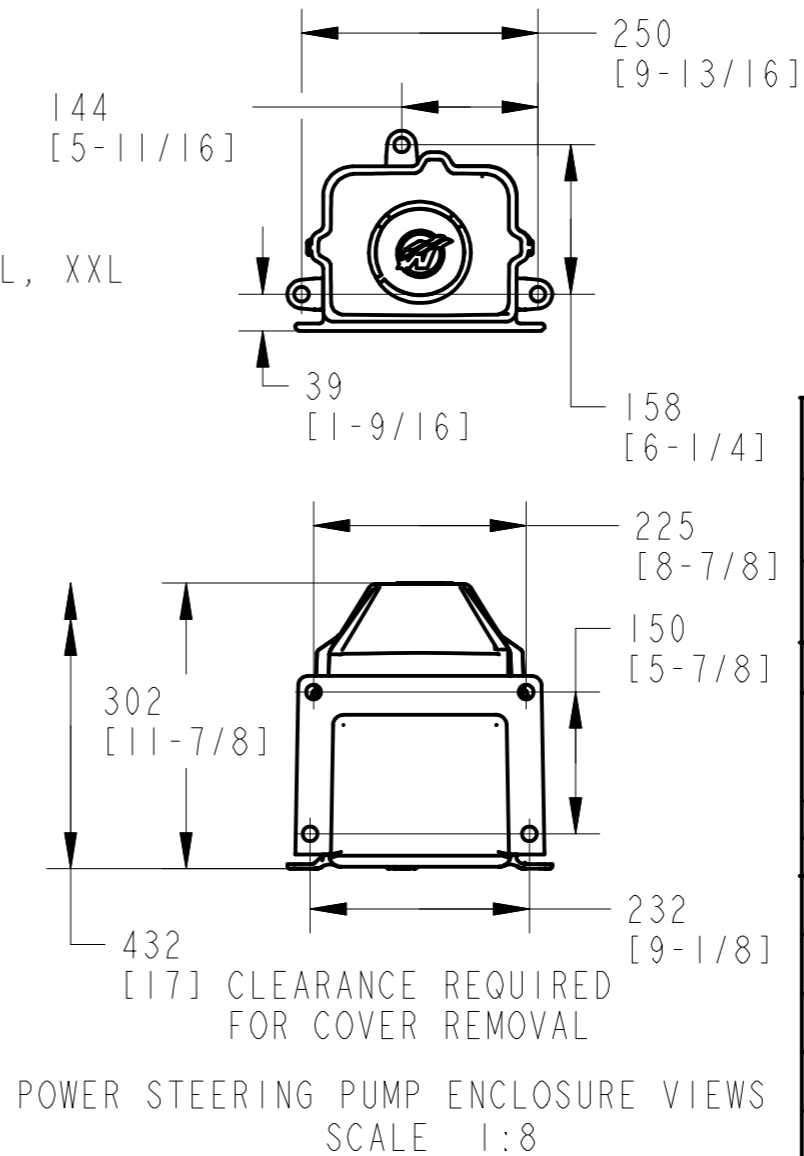
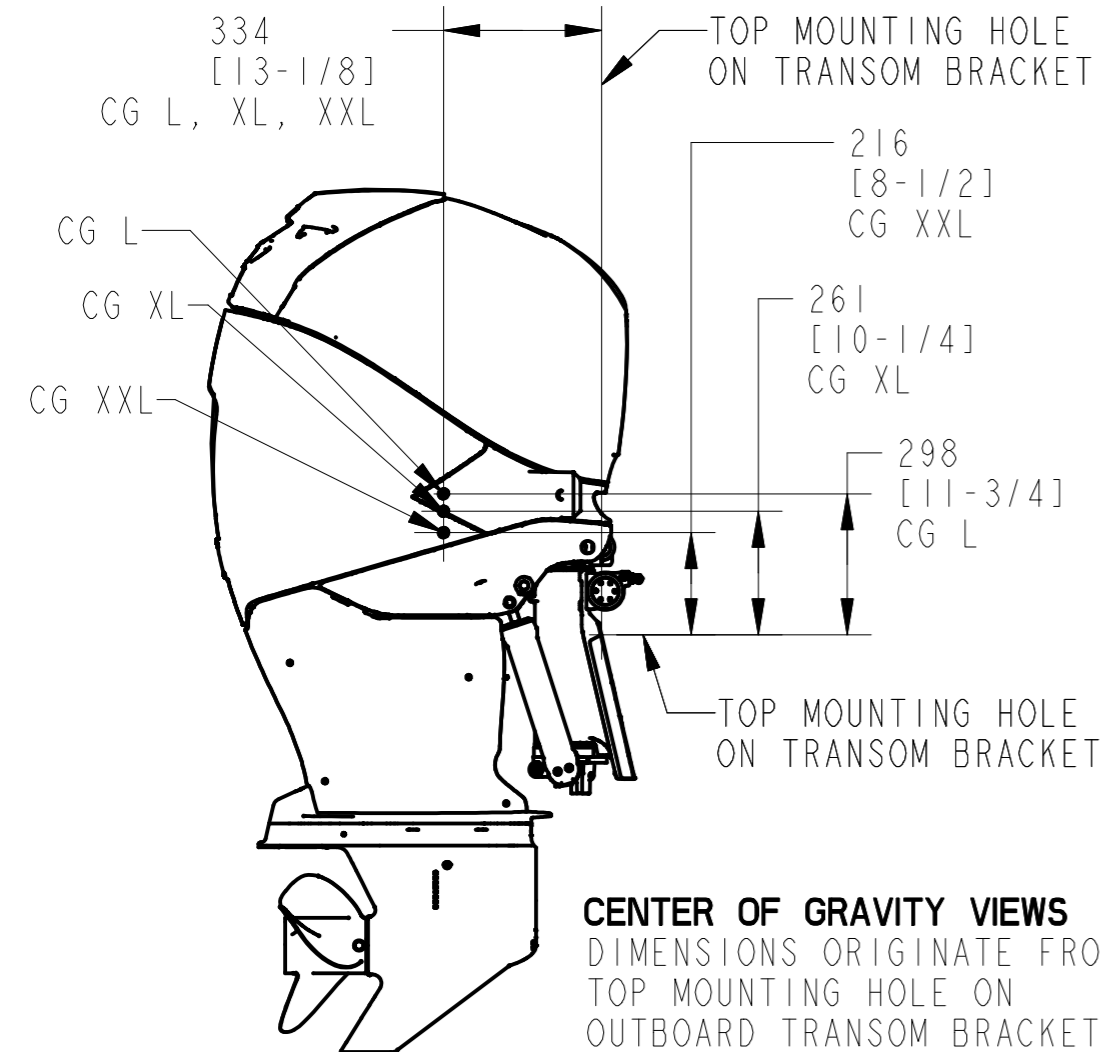
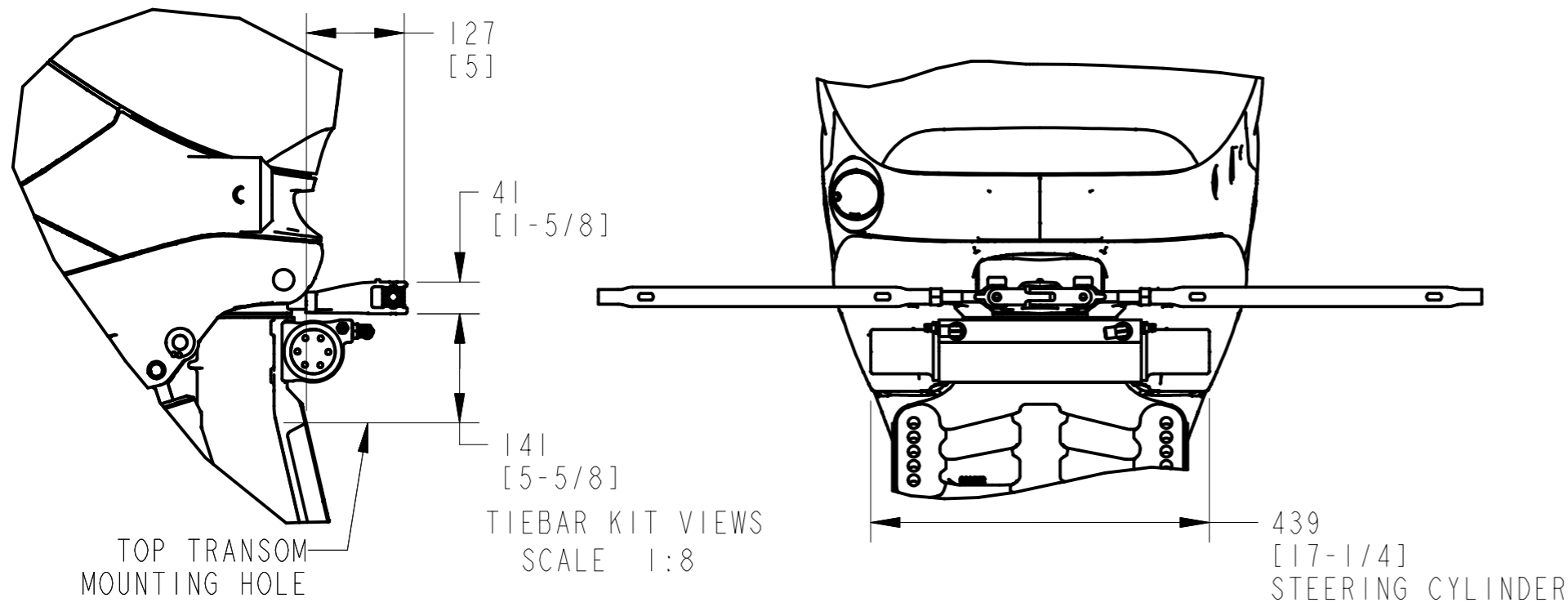


A- TRANSOM OPENING FOR DUAL INSTALLATION
B- SINGLE OUTBOARD OPENING
C- OUTBOARD CENTERLINE FOR DUAL INSTALLATION
* CONSIDER 30 mm FOR ADDITIONAL CLEARANCES

MATERIAL		
PER MERC SPEC:		
FINISH		
PER MERC SPEC:		
REF SPECS M-251-G		
THE INFORMATION CONTAINED IN THIS DOCUMENT IS TO BE TREATED AS TRADE SECRET AND CONFIDENTIAL TO MERCURY		
THIRD ANGLE PROJ	UNLESS OTHERWISE SPECIFIED	
	METRIC TOLERANCE	DIMENSIONS ARE AFTER PLATING BREAK ALL SHARP EDGES CHAM. TAPPED HOLES 90° X THD DIA MACHINED SURFACES 3.2 THREAD LENGTH = FULL THREADS
SCALE: 1:16	LINEAR	
DO NOT SCALE	ANGLES	
MANUF CAST	MATL ENG	MERCURY
MANUF MACH	PURCH	
OC	PRODUCT LINE	TITLE
	L6SC GEN. II	
APPROVED	DATE	INSTALLATION DRAWING
T. WALCZAK	08-JUN-2007	
CHECKED	DESIGNED	PART NUMBER
T. KRUPP	UMESHA.D	8M0029899
		SHEETS
		1 OF 3

0 KPC'S PER MERC SPEC M-251-G AS NOTED BY ■ OR ▣

LET	REVISIONS	BY	DATE	ECN
A	DRAWING RELEASE.	UD	24JUL2007	20364-07
B	SEE SHEET 3	UD	07FEB2008	20732-07



MATERIAL		PER MERC SPEC:
FINISH		PER MERC SPEC:
REF SPECS		M-251-G
THE INFORMATION CONTAINED IN THIS DOCUMENT IS TO BE TREATED AS TRADE SECRET AND CONFIDENTIAL TO MERCURY		
THIRD ANGLE PROJ	UNLESS OTHERWISE SPECIFIED	
	METRIC TOLERANCE	
SCALE: 1:16	LINEAR	DIMENSIONS ARE AFTER PLATING BREAK ALL SHARP EDGES CHAM. TAPPED HOLES 90° X THD DIA MACHINED SURFACES 3.2/√
DO NOT SCALE	ANGLES	THREAD LENGTH = FULL THREADS
MANUF CAST	MANUF ENG	
MANUF MACH	PURCH	
OC	PRODUCT LINE	TITLE
APPROVED	L6SC GEN. II	INSTALLATION DRAWING
CHECKED	DATE	PART NUMBER
T. WALCZAK	08-JUN-2007	8M0029899
T. KRUPP	DESIGNED	SHEETS
	UMESHA.D	2 OF 3

MOUNTING HARDWARE - SHIPPED WITH OUTBOARD

PART NO.	PART NAME	DESCRIPTION
10-67755-003	TRANSOM BOLT	1/2"x20x5.50" (3.25" THREAD)
11-826711-17	NYLON STOP NUT	1/2" x 20 UNF-2B
12-28421	INNER WASHER	0.516" x 1.50" x 0.12"
12-895062	OUTER WASHER	0.531" x 1.06" x 0.105"

AVAILABLE TRANSOM MOUNTING BOLTS - ALL BOLTS ARE 1/2-20 UNF-2A

10-67755005	TRANSOM BOLT	1/2"x20x2.50" (1.25" THREAD)
10-67755006	TRANSOM BOLT	1/2"x20x3.50" (1.25" THREAD)
10-814259	TRANSOM BOLT	1/2"x20x4.00" (2.25" THREAD)
10-67755-1	TRANSOM BOLT	1/2"x20x4.50" (2.25" THREAD)
10-67755003	TRANSOM BOLT	1/2"x20x5.50" (3.25" THREAD)
10-67755-2	TRANSOM BOLT	1/2"x20x6.50" (2.75" THREAD)
8M0028080	TRANSOM BOLT	1/2"x20x7.50" (2.75" THREAD)

(B1)

NOTES:

- 1) STATIC WATERLINE MUST BE BELOW THE IDLE RELIEF EXHAUST GROMMET (LOCATED AT REAR OF OUTBOARD) WHEN OUTBOARD IS AT FULL TUCK. INCREASE OUTBOARD MOUNTING HEIGHT OR ADJUST BOAT LOAD IF IDLE RELIEF EXHAUST GROMMET IS BELOW STATIC WATERLINE AT FULL TUCK.
- 2) ALL L (20") OUTBOARDS ARE SHIPPED WITH 12' OF 4 AWG BATTERY CABLES. SEE BATTERY CABLE TABLE FOR MAXIMUM CABLE LENGTHS FOR XL AND XXL MODELS. MAX. LENGTH IS THE SUM OF BOTH POSITIVE AND NEGATIVE CABLES.
- 3) FLYWHEEL PULLER/OUTBOARD LIFTING PLATE PART NUMBER IS 91-895343T02
- 4) ENGINE PROPPING RPM = 5800-6400 RPM.
- 5) FUEL LINE ID= 9.5mm (3/8")
- 6) DO NOT USE A PRIMER BULB WITH THIS OUTBOARD.
- 7) GAS AND OIL SPECIFICATIONS:
 - A) MINIMUM FUEL OCTANE RATING:
200, 225, & 250 HP = 87 (R+M)/2
275 & 300 HP = 91 (R+M)/2
 - B) ENGINE OIL: NMMA FC-W SAE 25W-40 P/N 92-858052K01 OR SAE 25W-50 P/N 92-858084K01.
 - C) GEARCASE OIL: CITGO DF 425 GEAR OIL P/N 92-802854A1
 - D) POWER STEERING FLUID:
SAE 0W-30 SYNTHETIC POWER STEERING FLUID P/N 92-858002K01.
- 8) TORQUE TRANSOM MOUNTING BOLTS TO 75 ±7 N-m [55 ±5 lb-ft]

LET	REVISIONS	BY	DATE	ECN
A	DRAWING RELEASE.	UD	24JUL2007	20364-07
B	1. REMOVED ENGINE WEIGHT TABLE.	UD	07FEB2008	20732-07

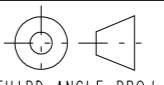

BATTERY CABLES

METERS/(FEET)
(SEE NOTE 2)

AWG	MAX LENGTH
2	11.2/(36.7)
1	13.8/(45.3)
1/0	17.7/(58.2)
2/0	22.8/(74.8)
3/0	28.3/(92.9)
4/0	35.6/(117.0)

TIEBAR KITS

PART NO.	DESCRIPTION
892722A02	DUAL 66-71 cm (26-28")
899156A01	DUAL 71-76 cm (28-30")
892724A02	DUAL 76-81 cm (30-32")
899157A01	DUAL 81-86 cm (32-34")
899158A01	DUAL 86-91 cm (34-36")
892726A02	+1 CONVERSION 66-71 cm (26-28")
899159A01	+1 CONVERSION 71-76 cm (28-30")
892728A02	+1 CONVERSION 76-81 cm (30-32")
899160A01	+1 CONVERSION 81-86 cm (32-34")
899161A01	+1 CONVERSION 86-91 cm (34-36")

MATERIAL		PER MERC SPEC:	
FINISH		PER MERC SPEC:	
REF SPECS		M-251-G	
THE INFORMATION CONTAINED IN THIS DOCUMENT IS TO BE TREATED AS TRADE SECRET AND CONFIDENTIAL TO MERCURY			
 THIRD ANGLE PROJ	UNLESS OTHERWISE SPECIFIED		
	METRIC TOLERANCE SCALE: 1:16 DO NOT SCALE		DIMENSIONS ARE AFTER PLATING BREAK ALL SHARP EDGES CHAM. TAPPED HOLES 90° X THD DIA MACHINED SURFACES ^{3.2} √ THREAD LENGTH = FULL THREADS
MANUF CAST	MANUF ENG		
MANUF MACH	PURCH		
QC	PRODUCT LINE	TITLE	
APPROVED	DATE	L6SC GEN. II	
T. WALCZAK	08-JUN-2007	INSTALLATION DRAWING	
CHECKED	DESIGNED	PART NUMBER	SHEETS
T. KRUPP	UMESHA.D	8M0029899	3 OF 3

